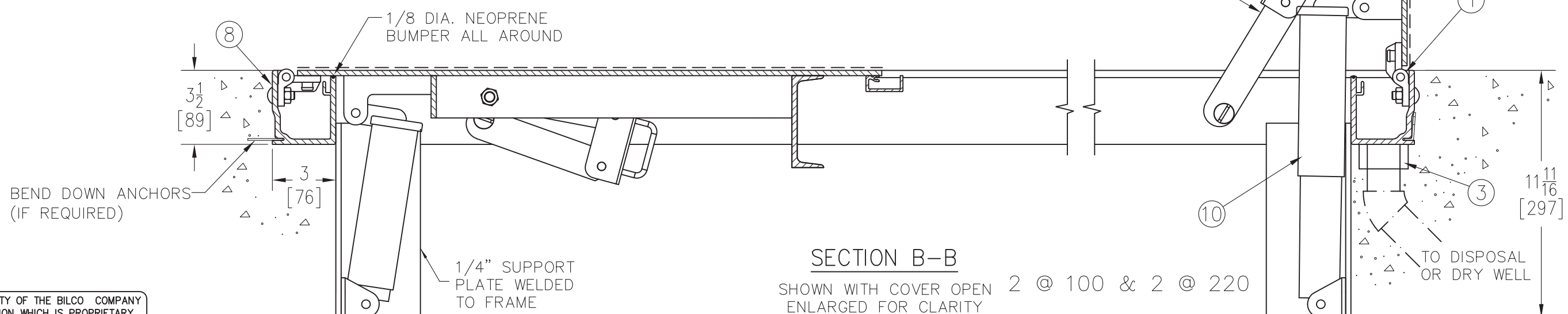


SECTION A-A  
STANDARD SLAM LOCK



SECTION B-B  
SHOWN WITH COVER OPEN 2 @ 100 & 2 @ 220  
ENLARGED FOR CLARITY

Sym.	Revision	Date	By
A	New Release		

**SPECIFICATIONS:**

- ① Bilco heavy duty forged stainless steel hinges with stainless steel pins
- ② Guide Arm
- ③ 1-1/2" drain coupling
- ④ Standard slam lock
- ⑤
- ⑥ Bilco automatic lock open arm
- ⑦ 1/4" aluminum diamond pattern plate cover
- ⑧ Bilco 1/4" aluminum channel frame with recessed anchors
- ⑨ Stainless steel lock strike
- ⑩ Stainless steel spring lifting mechanism
- ⑪ Heavy duty check chain

**INSTALLER NOTES:**

- A. Use caution. Cover is spring loaded. Do not remove safety shipping bolt until unit is to be installed and in normal horizontal operating position.
- B. Be sure unit is set on slight pitch toward drain corner.
- C. Before anchoring in place open and close door. Check to see that the door in the closed position rests on the frame all around. If not, shim under the frame at the proper corner.
- D. Do not reduce 1 1/2" drain pipe to dry well or disposal system.
- E. Bend down anchors if required

② UNIT(S) REQUIRED AS SHOWN (Aluminum Weldment)  
COVER REINF. FOR 300 Lbs. PER Sq. Ft.

SHOP FINISH:  
COVER: MILL FINISH  
FRAME: MILL FINISH  
HARDWARE: STAINLESS STEEL TYPE 316 (UNLESS OTHERWISE SPECIFIED)

**Customer:**

**P.O. N°**

**Job:**

**Builder:**

**Architect:**

**Engineer:**

**Sales Rep:** BILCO INTERNATIONAL  
PO BOX 1203  
NEW HAVEN CT 06505

Manufacturers of Doors for Special Services  
**Bilco®** THE BILCO COMPANY  
New Haven, Connecticut 06505

TYPE "JD" ALUMINUM DOUBLE LEAF ACCESS  
DOOR - SIZE 4'-6" x 8'-0"  
[ 1372 mm x 2438 mm ]

Drawn By BF,	Date	Drawing No. JD-17438	Rev. A
675105	Scale DO NOT SCALE		

THIS DRAWING IS THE PROPERTY OF THE BILCO COMPANY AND INCORPORATES INFORMATION WHICH IS PROPRIETARY. PUBLICATION AND/OR PUBLIC DISTRIBUTION IN WHOLE OR IN PART IS EXPRESSLY PROHIBITED WITHOUT THE PRIOR WRITTEN CONSENT OF THE BILCO COMPANY. THE INFORMATION CONTAINED HEREIN REMAINS THE PROPERTY OF THE BILCO COMPANY. ALL RIGHTS RESERVED.

JD-N\_AL 4-3-12 PLOT2