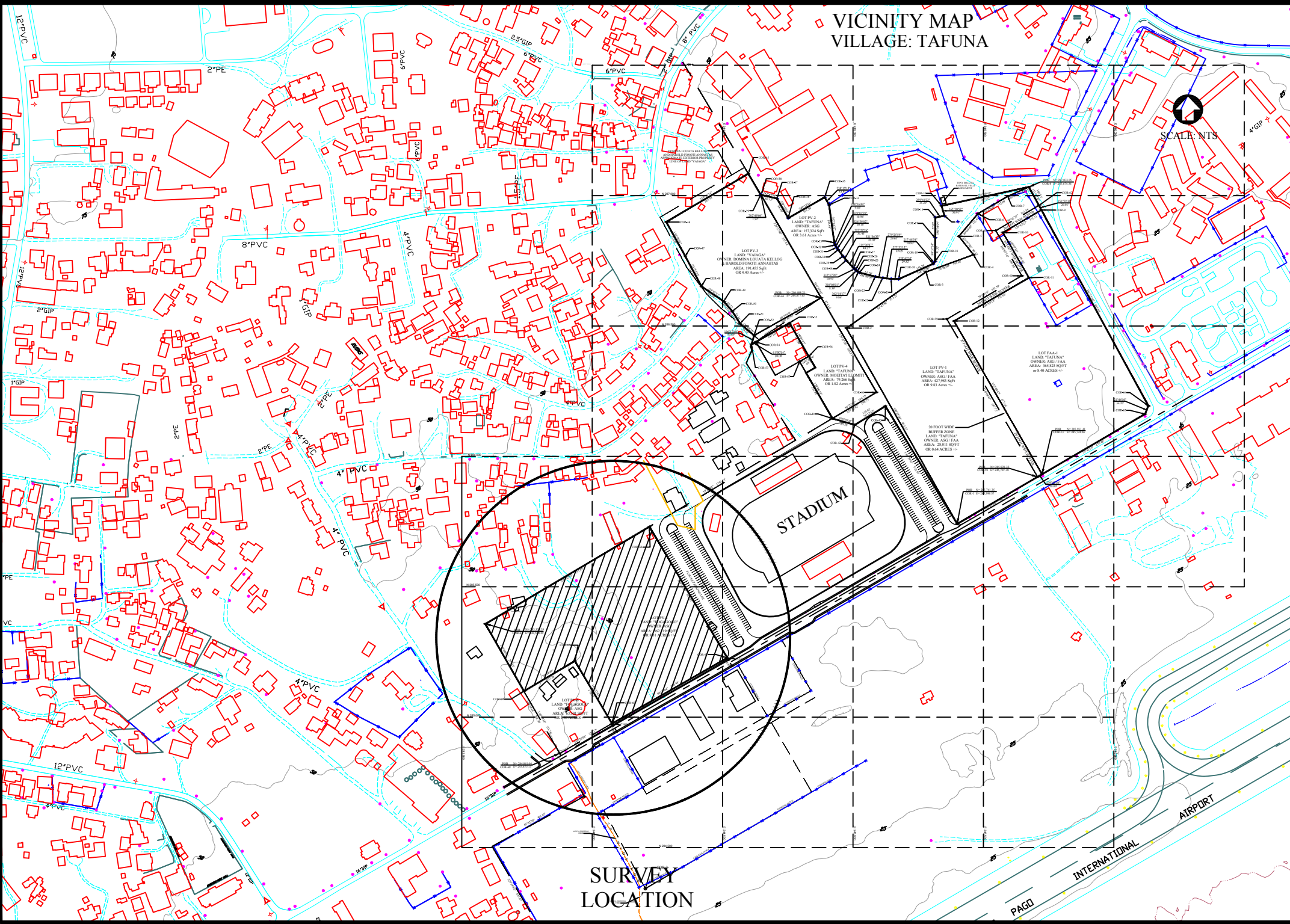
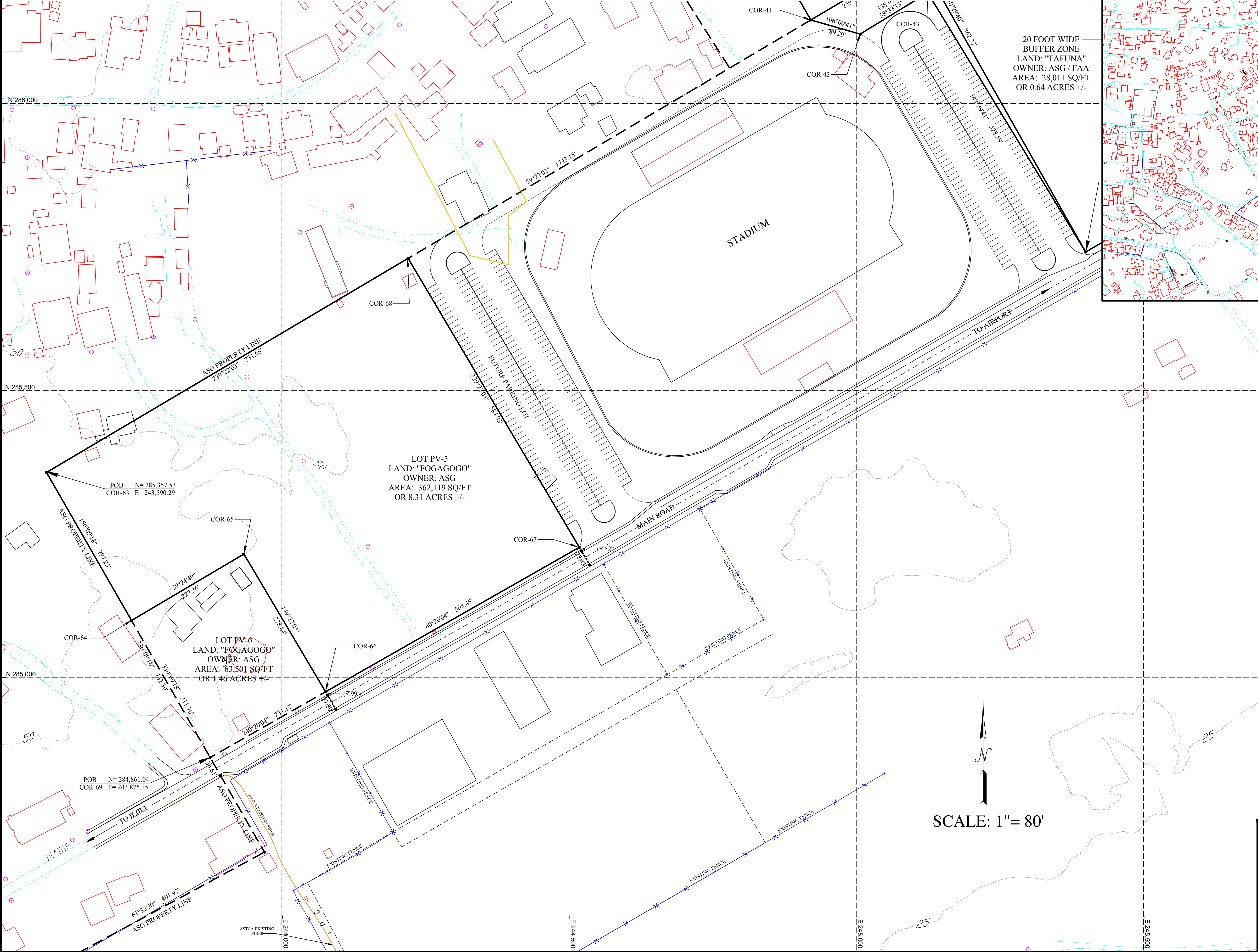


LEASE SURVEY PORTIONS OF LAND: "FOGAGOGO"
FOR ASPA PHOTO VOLTAIC PROJECT



LEGAL DESCRIPTION

ALL THAT CERTAIN REAL PROPERTY SITUATED IN THE VILLAGE OF TAFUNA COUNTY OF TUALATA, WESTERN DISTRICT, ISLAND OF TUTUILA AMERICAN SAMOA, BEING A PORTION OF LAND KNOWN AS "FOGAGOGO", OWN BY THE AMERICAN SAMOA GOVERNMENT MORE FULLY DESCRIBED AS FOLLOWS:

LOT PV-5

BEGINNING AT THE POINT OF BEGINNING (COR-63), FOUND ASG MONUMENT CONCRETE WHICH HAS COORDINATES OF NORTH 285,357.53 AND EAST 243,590.29 THENCE ON AZIMUTH OF 150° 09' 18" A DISTANCE OF 297.25 FEET TO COR-64 THENCE ON AZIMUTH OF 59° 24' 49" A DISTANCE OF 227.36 FEET TO COR-65 THENCE ON AZIMUTH OF 149° 22' 03" A DISTANCE OF 278.84 FEET TO COR-66 THENCE ON AZIMUTH OF 60° 20' 04" A DISTANCE OF 508.45 FEET TO COR-67 THENCE ON AZIMUTH OF 329° 22' 03" A DISTANCE OF 584.83 FEET TO COR-68 THENCE ON AZIMUTH OF 239° 22' 03" A DISTANCE OF 731.65 FEET TO COR-63 WHICH IS THE POINT OF BEGINNING, THE AREA BEING 362,119 SQ/FT OR 8.31 ACRES MORE OR LESS.

LOT PV-6

BEGINNING AT THE POINT OF BEGINNING (COR-69), A 3/4" REBAR SET IN CONCRETE CONCRETE WHICH HAS COORDINATES OF NORTH 284,861.04 AND EAST 243,875.15 THENCE ON AZIMUTH OF 330° 09' 18" A DISTANCE OF 311.76 FEET TO COR-64 THENCE ON AZIMUTH OF 59° 24' 49" A DISTANCE OF 227.36 FEET TO COR-65 THENCE ON AZIMUTH OF 240° 20' 04" A DISTANCE OF 231.17 FEET TO COR-66 WHICH IS THE POINT OF BEGINNING, THE AREA BEING 63,501 SQ/FT OR 1.46 ACRES MORE OR LESS.

<p>SURVEYOR'S CERTIFICATE</p> <p>This map correctly represents a survey, having a precision of 1 in 10,000 as computed by latitudes and departures, and was made by me or under my direction in conformance with the Code and Regulations of the Territory of American Samoa at the request of ASPA in MARCH 2019.</p>	<p>MANAGER'S CERTIFICATE</p> <p>This map has been examined by me or under my direction for conformance with the laws of American Samoa and the rules and regulations of the board of registrations for professional surveyor's and is hereby approved for registration this day of 2019.</p>
Registered Professional Surveyor No. 21	APPROVED: Manager of Lands and Surveys Division, DPW