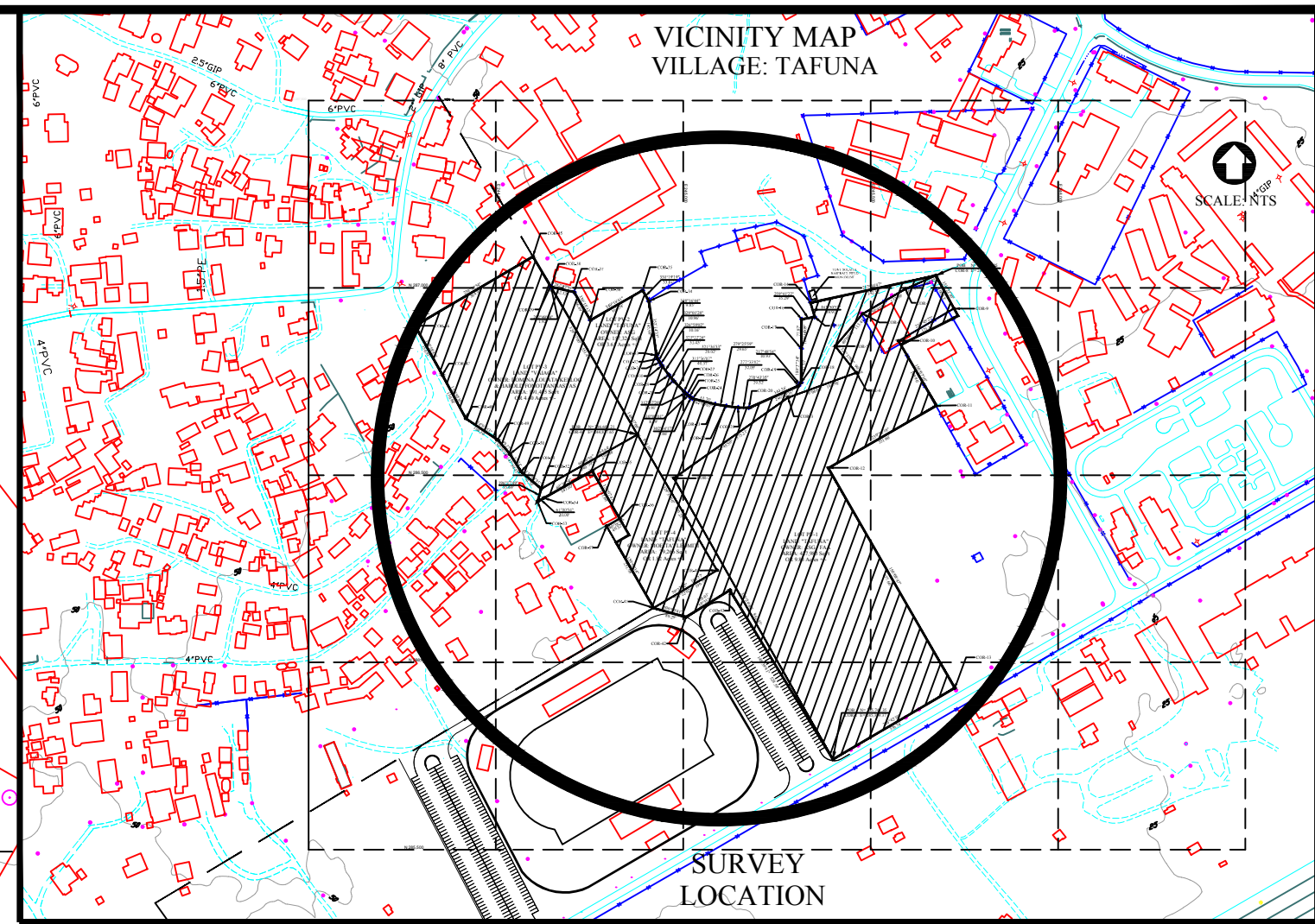
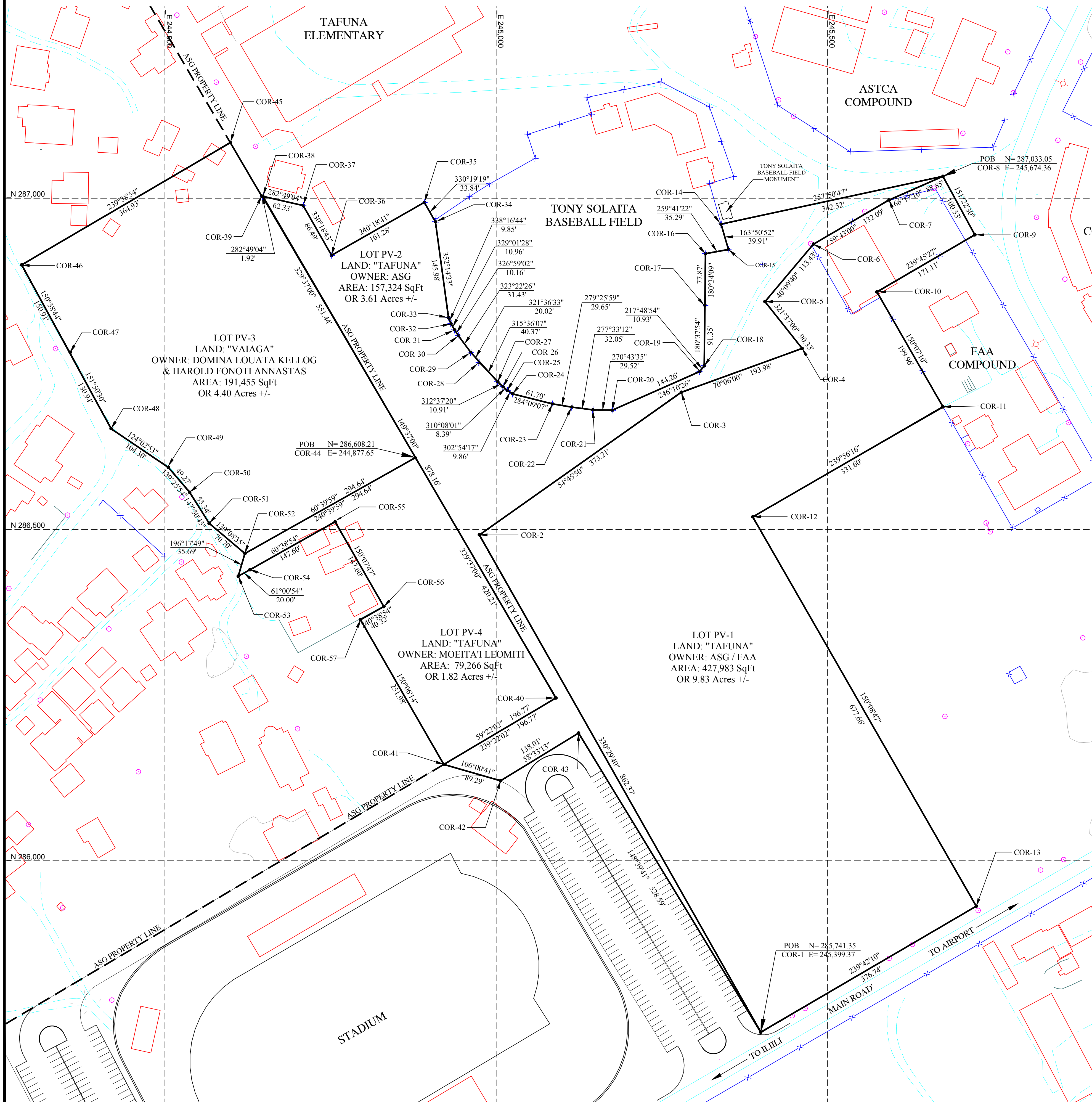


LEASE SURVEY PORTIONS OF LANDS: "TAFUNA" & "VAIAGA" FOR ASPA PHOTO VOLTAIC PROJECT



LEGAL DESCRIPTION
ALL THAT CERTAIN REAL PROPERTY SITUATED IN THE VILLAGE OF TAFUNA COUNTY OF TUALAUTA, WESTERN DISTRICT, ISLAND OF TUTUILA AMERICAN SAMOA, BEING A PORTION OF LAND KNOWN AS "TAFUNA", OWN BY THE AMERICAN SAMOA GOVERNMENT MORE FULLY DESCRIBED AS FOLLOWS:

LOT PV-1
BEGINNING AT THE POINT OF BEGINNING (COR-1), A 3/4" REBAR SET IN CONCRETE WHICH HAS COORDINATES OF NORTH 285,741.35 AND EAST 245,399.37, THENCE ON AZIMUTH OF 330° 29' 40" A DISTANCE OF 862.37 FEET TO COR-2, THENCE ON AZIMUTH OF 54° 45' 50" A DISTANCE OF 373.21 FEET TO COR-3, THENCE ON AZIMUTH OF 70° 06' 00" A DISTANCE OF 193.98 FEET TO COR-4, THENCE ON AZIMUTH OF 321° 37' 00" A DISTANCE OF 90.33 FEET TO COR-5, THENCE ON AZIMUTH OF 40° 09' 40" A DISTANCE OF 113.43 FEET TO COR-6, THENCE ON AZIMUTH OF 59° 43' 00" A DISTANCE OF 132.09 FEET TO COR-7, THENCE ON AZIMUTH OF 66° 17' 10" A DISTANCE OF 88.85 FEET TO COR-8, THENCE ON AZIMUTH OF 151° 22' 30" A DISTANCE OF 100.53 FEET TO COR-9, THENCE ON AZIMUTH OF 239° 45' 27" A DISTANCE OF 171.11 FEET TO COR-10, THENCE ON AZIMUTH OF 150° 07' 10" A DISTANCE OF 199.96 FEET TO COR-11, THENCE ON AZIMUTH OF 239° 56' 16" A DISTANCE OF 331.60 FEET TO COR-12, THENCE ON AZIMUTH OF 150° 08' 47" A DISTANCE OF 677.66 FEET TO COR-13, THENCE ON AZIMUTH OF 239° 42' 10" A DISTANCE OF 376.74 FEET TO COR-1, WHICH IS THE POINT OF BEGINNING, THE AREA BEING 427,983 SQ/FT OR 9.83 ACRES MORE OR LESS.

LOT PV-2
BEGINNING AT THE POINT OF BEGINNING (COR-8), A 3/4" REBAR SET IN CONCRETE WHICH HAS COORDINATES OF NORTH 285,741.35 AND EAST 245,399.37, THENCE ON AZIMUTH OF 257° 50' 47" A DISTANCE OF 342.52 FEET TO COR-14, THENCE ON AZIMUTH OF 163° 50' 52" A DISTANCE OF 3 9.91 FEET TO COR-15, THENCE ON AZIMUTH OF 259° 41' 22" A DISTANCE OF 35.29 FEET TO COR-16, THENCE ON AZIMUTH OF 180° 37' 54" A DISTANCE OF 91.35 FEET TO COR-17, THENCE ON AZIMUTH OF 217° 48' 54" A DISTANCE OF 10.93 FEET TO COR-18, THENCE ON AZIMUTH OF 246° 10' 26" A DISTANCE OF 144.26 FEET TO COR-19, THENCE ON AZIMUTH OF 270° 43' 35" A DISTANCE OF 29.52 FEET TO COR-20, THENCE ON AZIMUTH OF 277° 33' 12" A DISTANCE OF 32.05 FEET TO COR-21, THENCE ON AZIMUTH OF 279° 25' 59" A DISTANCE OF 29.65 FEET TO COR-22, THENCE ON AZIMUTH OF 284° 09' 07" A DISTANCE OF 61.70 FEET TO COR-23, THENCE ON AZIMUTH OF 302° 54' 17" A DISTANCE OF 9.86 FEET TO COR-24, THENCE ON AZIMUTH OF 310° 08' 01" A DISTANCE OF 8.39 FEET TO COR-25, THENCE ON AZIMUTH OF 312° 37' 20" A DISTANCE OF 10.91 FEET TO COR-26, THENCE ON AZIMUTH OF 315° 36' 07" A DISTANCE OF 40.37 FEET TO COR-27, THENCE ON AZIMUTH OF 321° 36' 33" A DISTANCE OF 20.02 FEET TO COR-28, THENCE ON AZIMUTH OF 326° 59' 02" A DISTANCE OF 10.16 FEET TO COR-29, THENCE ON AZIMUTH OF 329° 01' 28" A DISTANCE OF 10.96 FEET TO COR-30, THENCE ON AZIMUTH OF 338° 16' 44" A DISTANCE OF 9.85 FEET TO COR-31, THENCE ON AZIMUTH OF 352° 14' 33" A DISTANCE OF 145.98 FEET TO COR-32, THENCE ON AZIMUTH OF 330° 19' 19" A DISTANCE OF 33.84 FEET TO COR-33, THENCE ON AZIMUTH OF 240° 18' 41" A DISTANCE OF 161.28 FEET TO COR-34, THENCE ON AZIMUTH OF 330° 18' 43" A DISTANCE OF 86.49 FEET TO COR-35, THENCE ON AZIMUTH OF 282° 49' 04" A DISTANCE OF 62.33 FEET TO COR-36, THENCE ON AZIMUTH OF 282° 49' 04" A DISTANCE OF 1.92 FEET TO COR-37, THENCE ON AZIMUTH OF 149° 37' 00" A DISTANCE OF 878.16 FEET TO COR-38, THENCE ON AZIMUTH OF 239° 22' 02" A DISTANCE OF 196.77 FEET TO COR-39, THENCE ON AZIMUTH OF 106° 00' 41" A DISTANCE OF 89.29 FEET TO COR-40, THENCE ON AZIMUTH OF 58° 33' 13" A DISTANCE OF 138.01 FEET TO COR-41, THENCE ON AZIMUTH OF 148° 39' 41" A DISTANCE OF 528.59 FEET TO COR-42, THENCE ON AZIMUTH OF 330° 29' 40" A DISTANCE OF 862.37 FEET TO COR-43, THENCE ON AZIMUTH OF 54° 45' 50" A DISTANCE OF 373.21 FEET TO COR-44, THENCE ON AZIMUTH OF 70° 06' 00" A DISTANCE OF 193.98 FEET TO COR-45, THENCE ON AZIMUTH OF 321° 37' 00" A DISTANCE OF 90.33 FEET TO COR-46, THENCE ON AZIMUTH OF 40° 09' 40" A DISTANCE OF 113.43 FEET TO COR-47, THENCE ON AZIMUTH OF 59° 43' 00" A DISTANCE OF 132.09 FEET TO COR-48, THENCE ON AZIMUTH OF 66° 17' 10" A DISTANCE OF 88.85 FEET TO COR-49, WHICH IS THE POINT OF BEGINNING, THE AREA BEING 157,324 SQ/FT OR 3.61 ACRES MORE OR LESS.


LEGAL DESCRIPTION
ALL THAT CERTAIN REAL PROPERTY SITUATED IN THE VILLAGE OF TAFUNA COUNTY OF TUALAUTA, WESTERN DISTRICT, ISLAND OF TUTUILA AMERICAN SAMOA, BEING A PORTION OF LAND KNOWN AS "VAIAGA", INDIVIDUALLY OWN BY DOMINA LOUATA KELLOG AND HAROLD FONOTI ANNASTAS AS RECORDED IN LAND TRANSFER VOLUME-8 PAGE-131 MORE FULLY DESCRIBED AS FOLLOWS:

LOT PV-3
BEGINNING AT THE POINT OF BEGINNING (COR-44), A 3/4" REBAR SET IN CONCRETE WHICH HAS COORDINATES OF NORTH 286,608.21 AND EAST 244,877.65, THENCE ON AZIMUTH OF 329° 37' 00" A DISTANCE OF 551.44 FEET TO COR-45, THENCE ON AZIMUTH OF 239° 38' 54" A DISTANCE OF 364.93 FEET TO COR-46, THENCE ON AZIMUTH OF 150° 58' 44" A DISTANCE OF 150.91 FEET TO COR-47, THENCE ON AZIMUTH OF 151° 50' 30" A DISTANCE OF 139.94 FEET TO COR-48, THENCE ON AZIMUTH OF 124° 02' 53" A DISTANCE OF 104.30 FEET TO COR-49, THENCE ON AZIMUTH OF 139° 25' 54" A DISTANCE OF 49.27 FEET TO COR-50, THENCE ON AZIMUTH OF 147° 50' 45" A DISTANCE OF 55.34 FEET TO COR-51, THENCE ON AZIMUTH OF 13° 08' 35" A DISTANCE OF 70.70 FEET TO COR-52, THENCE ON AZIMUTH OF 60° 39' 59" A DISTANCE OF 294.64 FEET TO COR-44, WHICH IS THE POINT OF BEGINNING, THE AREA BEING 191,455 SQ/FT OR 4.40 ACRES MORE OR LESS.

LEGAL DESCRIPTION
ALL THAT CERTAIN REAL PROPERTY SITUATED IN THE VILLAGE OF TAFUNA COUNTY OF TUALAUTA, WESTERN DISTRICT, ISLAND OF TUTUILA AMERICAN SAMOA, BEING A PORTION OF LAND KNOWN AS "TAFUNA", INDIVIDUALLY OWN BY MOEITAI'LEOMITI AS RECORDED IN NATIVE LAND TITLES VOLUME-2 PAGE-292 MORE FULLY DESCRIBED AS FOLLOWS:

LOT PV-4
BEGINNING AT THE POINT OF BEGINNING (COR-44), A 3/4" REBAR SET IN CONCRETE WHICH HAS COORDINATES OF NORTH 286,608.21 AND EAST 244,877.65, THENCE ON AZIMUTH OF 240° 39' 59" A DISTANCE OF 294.64 FEET TO COR-52, THENCE ON AZIMUTH OF 196° 17' 49" A DISTANCE OF 35.69 FEET TO COR-53, THENCE ON AZIMUTH OF 61° 00' 54" A DISTANCE OF 20.00 FEET TO COR-54, THENCE ON AZIMUTH OF 60° 38' 54" A DISTANCE OF 147.60 FEET TO COR-55, THENCE ON AZIMUTH OF 150° 07' 47" A DISTANCE OF 147.60 FEET TO COR-56, THENCE ON AZIMUTH OF 240° 38' 54" A DISTANCE OF 40.32 FEET TO COR-57, THENCE ON AZIMUTH OF 150° 06' 14" A DISTANCE OF 251.98 FEET TO COR-58, THENCE ON AZIMUTH OF 59° 22' 02" A DISTANCE OF 196.77 FEET TO COR-40, THENCE ON AZIMUTH OF 329° 37' 00" A DISTANCE OF 420.21 FEET TO COR-44, WHICH IS THE POINT OF BEGINNING, THE AREA BEING 79,266 SQ/FT OR 1.82 ACRES MORE OR LESS.

- NOTES:**
- 1) ALL COORDINATES ARE USGS AMERICAN SAMOA DATUM OF 1962.
 - 2) CONTROL TRAVERSE WAS DERIVED FROM SATELLITE TRIG. STATION (022).
 - 3) CORNERS No.1 (COR-1) TO No.7 (COR-7), No.10 (COR-10) TO No.11 (COR-11) AND No.13 (COR-13) FOLLOWS ALONG THE EXISTING FAA FENCE LINE.
 - 4) CORNERS No.8 (COR-8) AND No.9 (COR-9) WERE SET WITH 3/4" REBARS IN CONCRETE.
 - 5) CORNER No.12 WAS NOT SET DURING THE SURVEY BUT WILL BE SET DURING CONSTRUCTION.
 - 6) CORNERS No.14 (COR-14) TO No.34 (COR-34) FOLLOWS ALONG THE TONY SOLAITA BASEBALL FIELD EXISTING FENCE LINE.
 - 7) CORNERS No.35 (COR-35) TO No.38 (COR-38) FOLLOWS ALONG THE NEW GYM CONSTRUCTION FENCE AND THE TAFUNA ELEMENTARY SCHOOL EXISTING FENCE LINE.
 - 8) CORNERS No.39 (COR-39) TO No.43 (COR-43), No.45 (COR-45) TO No.48 (COR-48) AND No.57 (COR-57) WERE SET WITH 3/4" REBARS.
 - 9) CORNERS No.49 (COR-49) TO No.52 (COR-52) FOLLOWS ALONG THE EXISTING FENCE LINE.
 - 10) CORNERS No.52 (COR-52) TO No.56 (COR-56) WERE FOUND 2" CAPS IN CONCRETE. ALL CAPS MARKED L.P. FRENCH RPS 20.
 - 11) CORNERS No.46 (COR-46) TO No.48 (COR-48) FOLLOWS THE BACK EDGE OF EXISTING CURB.
 - 12) AT CORNER No.40 (COR-40), I FOUND A ROUND CONCRETE MONUMENT WITH A STEEL PIN IN THE CENTER. THE MONUMENT WAS MARKED GAS 1468.83 12/27. THIS IS THE SAME ASG MONUMENT THAT L.P. FRENCH FOUND DURING HIS RESURVEY OF LAND TAFUNA.
 - 13) CORNER No.44 (COR-44) I FOUND A 2" CAP IN CONCRETE SIX PLUS FEET BELOW THE EXISTING GROUND SURFACES. CAP WAS MARKED L.P. FRENCH RPS 20. A NEW REFERENCE CORNER WAS SET ON THE EXISTING SURFACE.
 - 14) THIS SURVEY WAS REQUESTED BY ASG FOR THE PROPOSED PHOTO VOLTAIC PROJECT.
 - 15) FOR REFERENCES SEE RESURVEY MAP # P-33-89 BY L.P. FRENCH RPS 20.
 - 16) FIELD SURVEY WERE CONDUCTED BY ASPA SURVEY DIVISION.

SURVEYOR'S CERTIFICATE This map correctly represents a survey, having a precision of 1 in 10,000, as computed by latitudes and departures, and was made by me or under my direction in conformance with the Code and Regulations of the Territory of American Samoa at the request of ASPA in MARCH 2019.	MANAGER'S CERTIFICATE This map has been examined by me or under my direction for conformance with the laws of American Samoa and the rules and regulations of the board of registrations for professional surveyors and is hereby approved for registration this day of 2019.
	APPROVED: Manager of Lands and Surveys Division, DPW

SCALE: 1"= 80'
ASPA #21-001-19